

Primary Tumor cell lines: Consumables and Service



Processing of tumor tissue to establish patient-derived cell lines

Developing preclinical cancer models has contributed to a more detailed understanding of carcinoma initiation and progression. To identify novel molecular markers and to test innovative treatment regimes, suitable *in vivo* and *in vitro* models are needed.

Establishing cell lines successfully can be achieved from either fresh tumor tissue, from xenografts, or from deep-frozen tumor tissue and xenografts.

To support you in your tedious daily work, we at CLS offer

1. Consumables and media, which enable tissue processing at an enhanced success rate.
2. Service to process tumor tissues by our skilled technicians. We provide detailed information throughout the whole process.

Ordering information - Consumables

Cat. no.	Name of product / Product designation	Size
915011.1	TDclp 6-well-plate, coated for improved adherence of tumor cells	1 plate
915011.2	TDclp 6-well-plate, coated for improved adherence of tumor cells	2 plates
915011.3	TDclp 6-well-plate, coated for improved adherence of tumor cells	3 plates
915011.4	TDclp 6-well-plate, coated for improved adherence of tumor cells	4 plates
915011.5	TDclp 6-well-plate, coated for improved adherence of tumor cells	5 plates
820412.1	CAPME, medium supporting the growth of tumor cells, with supplement	250 ml
820412.2	CAPME, medium supporting the growth of tumor cells, with supplement	500 ml
850712	Starter-Kit, 1x TDclp 6-well-plate and 1x CAPME, 250 ml	Kit

Additional products

830100	Accutase, Detaching solution	100 ml
--------	------------------------------	--------

Please send a request in case of bulk orders

Ordering information - Service

900240	Processing of tumor tissue, cell culture and follow up of clonal development. Consumables included.	1 tissue
900241	Propagation of one proliferating tumor cell clone up to Passage 2. Morphological data, Mycoplasma testing, cryopreservation of three cryovials (about 2 Mio. cells/cryovial) and consumables are included.	1 tissue
900242	Establishment of cell line from tumor cell clone, >10 passages. Morphological data, STR Analysis (human-derived tissue), species-specific PCR (animal-derived tissue), Mycoplasma testing, cryopreservation of Master stock and consumables are included.	1 tissue

Examples of successfully established cell lines.

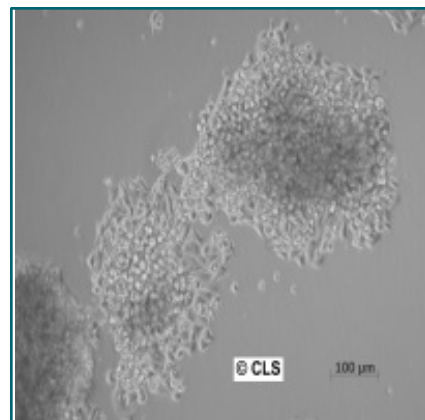
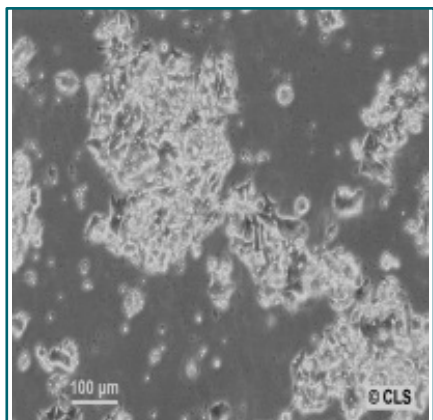


Fig. 1: Cell lines established as *in vitro* cultures from primary tumor tissue of a patient suffering from colorectal carcinoma.

Left: HROC24, from primary patient-derived tumor tissue.

Right: HROC24 T1 M1, from xenograft.

References

Linnebacher M, Maletzki C, Ostwald C, Krohn M, Klar E and Prall F. Cryopreservation of human colorectal carcinomas prior to xenografting. *Cancer* 10: 362-370, 2010.

Maletzki C, Stier S, Gruenert U, Gock M, Ostwald C, Prall F and Linnebacher M. Establishment, Characterization and Chemosensitivity of Three Mismatch Repair Deficient Cell Lines from Sporadic and Inherited Colorectal Carcinomas. *PLoS ONE* 7(12): e52485, 2012.

Mullins C, Schneider B, Stockhammer F, Krohn M, Classen CF and Linnebacher M. Establishment and Characterization of Primary Glioblastoma Cell Lines from Fresh and Frozen Material: A Detailed Comparison. *PLoS ONE* 8(8): e71070, 2013.

We offer scaled pricing when several tissues must be processed. Please enquire to receive a detailed quotation.

Shipment and storage details of plates and media

The plates are being shipped cooled and must be refrigerated after delivery.

Cell culture media are shipped at two differing temperatures. The medium comes cooled on blue ice, the supplement comes deep-frozen in a separate small box filled with dry ice. Immediately refrigerate the media, and store the supplement at -20°C until use.

Shipment and storage details of tumor tissue for processing at CLS

Frozen tissue:

Please ship the deep-frozen tumor tissue on dry ice to the address as indicated below.

The tissue(s) must not be subjected to any thawing step during transit as this will destroy the material.

Fresh tissue:

Please ship fresh tissue cooled to the address as indicated below.

As transport medium, we recommend the cell culture medium supplemented with antibiotics, but without serum. Please enquire for further details.

CLS Cell Lines Service GmbH
Dr.Eckener-Strasse 8
69214 Eppelheim
Germany

Phone: +49(0)6221 700799
Fax: +49(0)6221 700717
E-Mail: info@clsgmbh.de

Certified ISO 9001:2008



All products are intended for research use only.
Not to be used in human beings.
For more information you may browse our website:
www.clsgmbh.de

Copyright CLS GmbH, V1/2016/1215-F20